



BLUECHIP

Natural Cladding



EXATECH



[www.bluechipgroup.net.au](http://www.bluechipgroup.net.au)



# EXATECH

## Porcelain Facade System

### Description

EXATECH is a high-tech extruded porcelain ceramic system installed as a ventilated and/or insulated facade. Engineered to perform and highly versatile, it is installed using the BICEP Bracketry system. EXATECH can be installed as an insulated system using our IROCK Non-combustible Facade Insulation for high end applications. This is ideal for projects requiring higher R-values while decreasing energy costs and CO2 emissions at the same time. EXATECH offers extreme performance against the elements and is fast, economical and environmentally friendly. Available in a wide variety of natural finishes including Solid, Stone, Cement, Marble and Wood Finishes, it is no surprise EXATECH is the ventilated façade of choice.

### Product Benefits



#### PRECISION MANUFACTURING

Manufactured according to ISO 10545-2, the high precision extrusion technology of EXATECH porcelain facade tiles are rectified on all 4 sides, reducing tolerances to a minimum and ensuring precision installation.



#### EXTREME DURABILITY

EXATECH porcelain facade tiles are tested to ISO 10545-4 and achieves double the standard breaking strength of  $\geq 3,000$  N. EXATECH is able to withstand a huge  $\geq 6,000$  N.



#### IMPACT PROOF

EXATECH porcelain facade tiles are tested to ISO 10545-4 and achieves double the standard breaking strength of  $\geq 3,000$  N. EXATECH is able to withstand a huge  $\geq 6,000$  N.



#### NON-COMBUSTIBLE

As expected EXATECH porcelain tiles are a non-combustible facade material that can be used internally or externally wherever a non-combustible material is required.



#### GRAFFITI PROOF

EXATECH extruded porcelain panels have been produced to ensure a water absorption coefficient of less than 0.5%. Due to this characteristic, the graffiti paint will never penetrate the panel, remaining on the surface.



#### NATURALLY FOREVER

Enriching new and refurbished buildings, EXATECH porcelain tiles imparts an exclusive contemporary character to all projects. It is elegant, natural and looks continually effective over its independently declared service life of 50+ years.



#### ENVIRONMENTALLY FRIENDLY

Heavily focused on the circular economy, the EXATECH porcelain tiles manufacturing recovers 100% of the residual material generated during the production process, reintroducing approximately 40% of recycled content in our raw material.



#### EPD VERIFIED

EXATECH is Eco-sustainable and a 100% recyclable building material. EXATECH porcelain tiles have been EPD verified to enable use in the most environmentally sensitive construction projects.

### Product Range



EXATECH Full Body Finish



EXATECH Stone Finish



EXATECH Cement Finish



EXATECH Marble Finish



EXATECH Wood Finish

### Profiles



**Specification Code:** EXATECH 397 x 20mm



**Specification Code:** EXATECH 600 x 20mm

### Availability

DESCRIPTION	TILE SIZES	LEAD TIME	MOQ
EXATECH 20mm Full Body	800, 1000, 1200, 1600 x 397, 600mm	14-16 Weeks	300m <sup>2</sup>
EXATECH 20mm Stone	800, 1000, 1200, 1600 x 397, 600mm	14-16 Weeks	300m <sup>2</sup>
EXATECH 20mm Cement	800, 1000, 1200, 1600 x 397, 600mm	14-16 Weeks	300m <sup>2</sup>
EXATECH 20mm Marble	800, 1000, 1200, 1600 x 397, 600mm	14-16 Weeks	300m <sup>2</sup>
EXATECH 20mm Wood	800, 1000, 1200, 1600 x 397, 600mm	14-16 Weeks	300m <sup>2</sup>

### System Components



AS 1530.1 Sarking



Breathable Barriers



Facade Exsulation



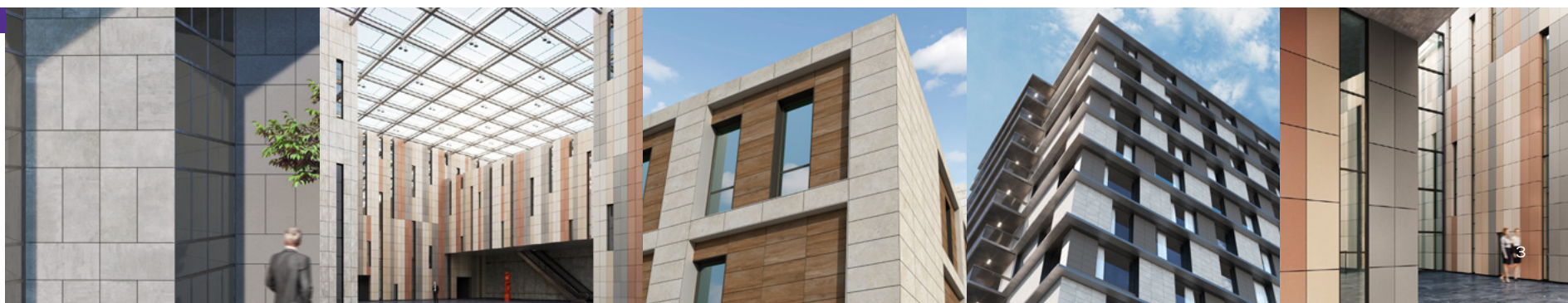
Steel Subframe



Aluminium Subframe

### INSTALL & TECHNICAL

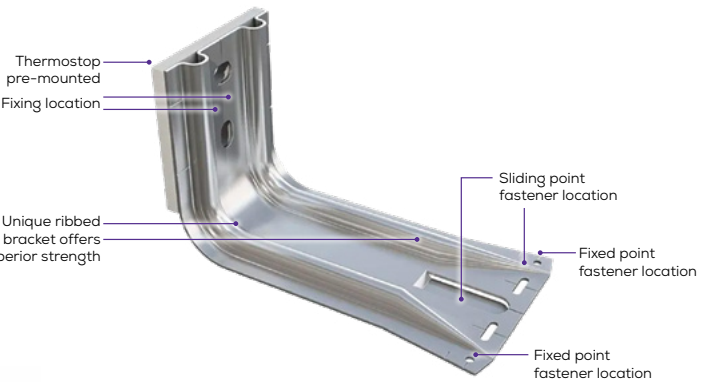
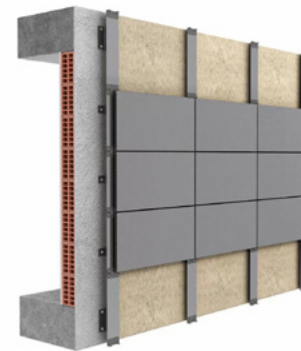
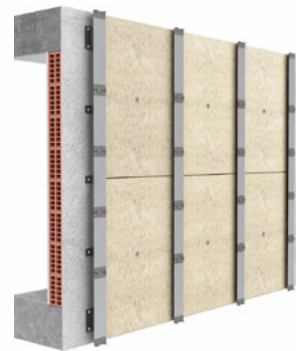
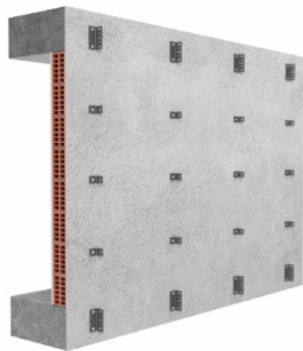
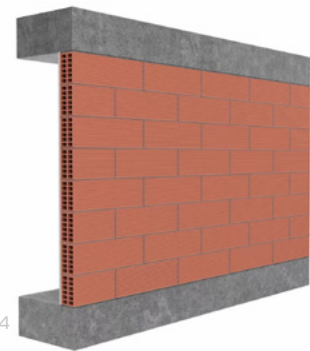
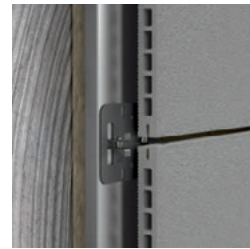
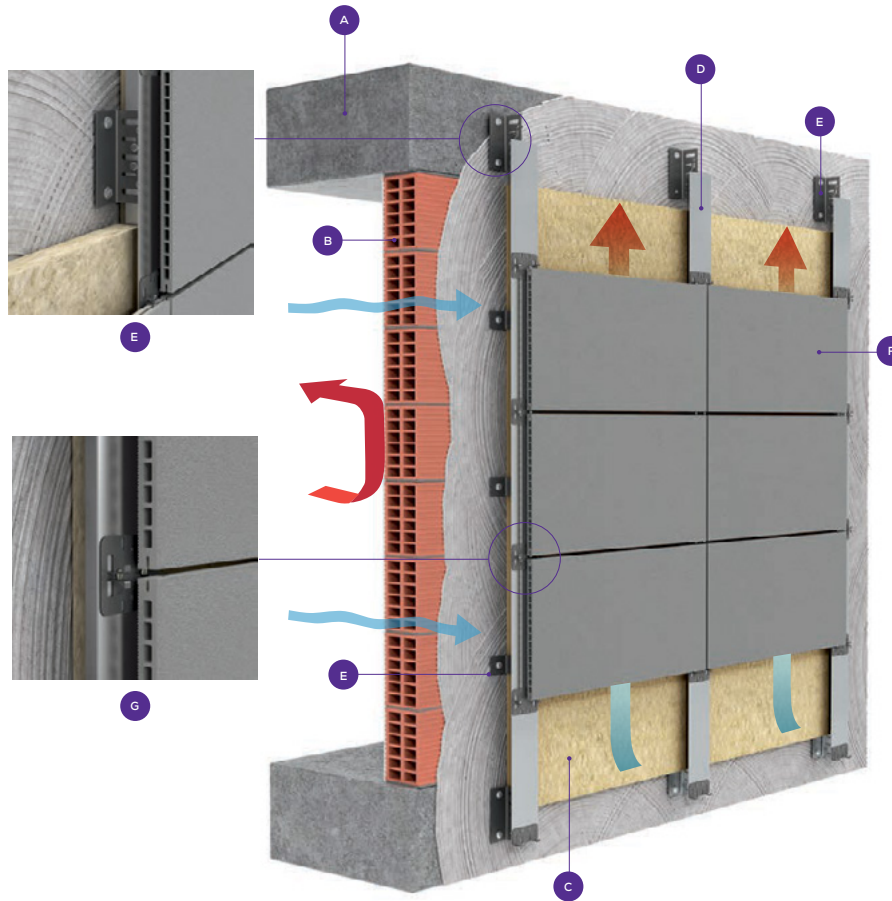
For installation and technical information, scan the QR code and view 'Downloads' tab.



# EXATECH

## Porcelain Facade System

- (A)**  
Floor framing
- (B)**  
Wall
- (C)**  
IROCK Non-combustible Exsulation
- (D)**  
Profile
- (E)**  
Brackets
- (F)**  
EXATECH Porcelain Facade System
- (G)**  
Fixing System



### WHAT IS A VENTILATED FACADE?

A ventilated facade is a constructive enclosure solution with a ventilated cavity between the exterior cladding and the backing wall. The ventilated cavity allows the exit and entry of air through its openings (bottom and top) as well as between the panel open joints. The origin of the system comes from the need to protect buildings against snow and rain, where a double layer system is proposed. It consists of two separated enclosure layers forming a cavity that enhances the circulation of air. This air flow removes any type of moisture that may appear.

**Highly versatile:** The bracket and rail system can be configured for any rainscreen façade project – including sloping façades and curved structures. It is suitable for any substrate, cladding material or insulation thickness. As well as accommodating both vertical and horizontal installation configurations, the system can also be used in soffit applications.

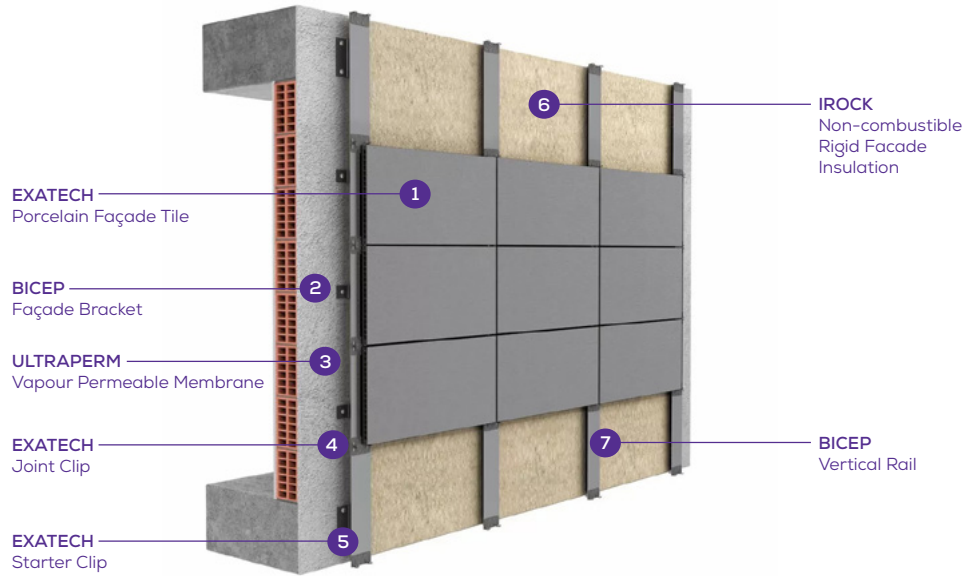
**Third-party accredited:** The BICEP® facade support system is manufactured to all current regulations and standards including EN1090, ISO9001 and ISO14001.

**Speed of installation:** The system is configured to ensure quick and easy installation while maintaining the accuracy required for structural security.

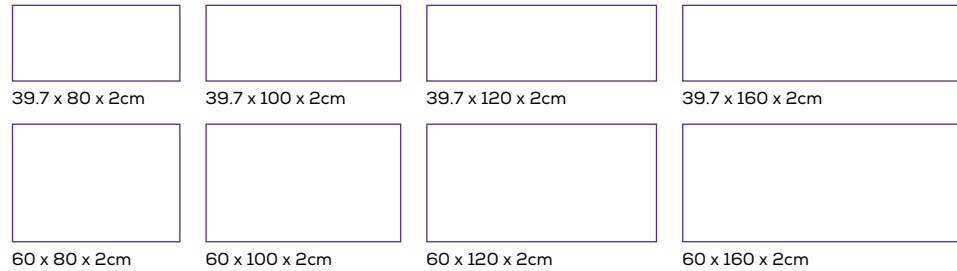
**Cost effective:** Thanks to the strength of the unique patented bracket design, potentially fewer brackets are needed per square metre – ensuring maximum quality and performance for minimum cost.

# EXATECH

## Porcelain Facade System

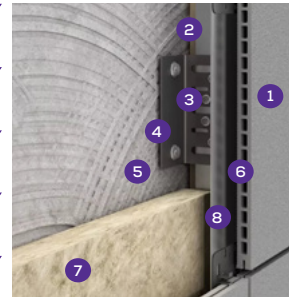
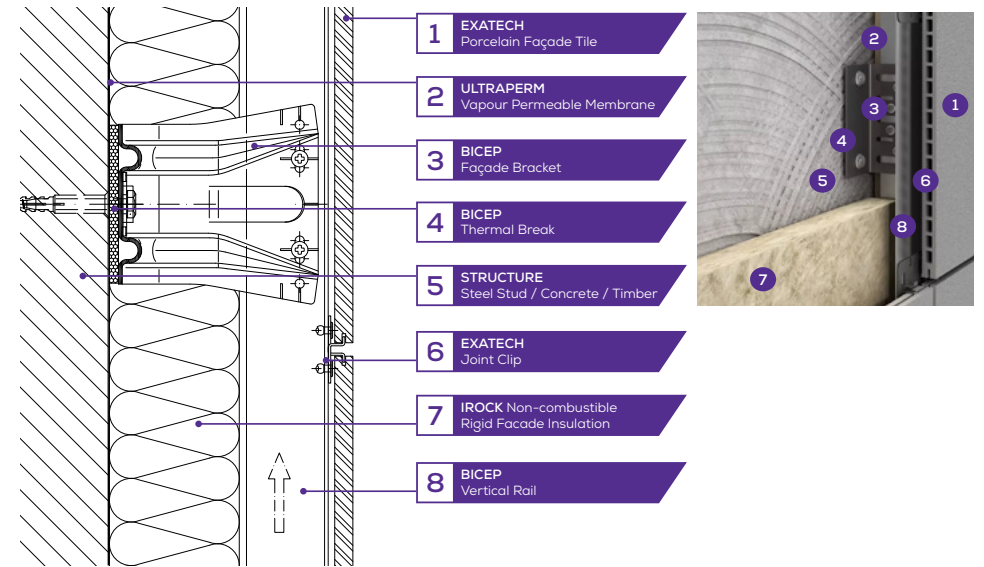


### Available Sizes



## Specification

<b>SYSTEM DESCRIPTION</b>	EXATECH high-tech extruded porcelain ceramic system fixed to BICEP Bracket System with external IROCK Non-combustible Façade Insulation & Weather Barrier							
<b>FACADE MATERIAL</b>	EXATECH Porcelain Façade System							
<b>COLOUR</b>	Refer External Finishes Schedule							
<b>FIXING METHOD</b>	Clip Fix							
<b>SUB-FRAME SYSTEM</b>	BICEP Bracket System For Externally Insulated Facades							
<b>EXTERNAL INSULATION</b>	IROCK _mm Thick Non-Combustible Façade Insulation							
<b>WEATHER BARRIER</b>	ULTRAPERM Vapour Permeable Membrane OR Rigid Façade Sheathing Board							
<b>R-VALUE</b>	30mm	40mm	50mm	60mm	80mm	100mm	120mm	140mm
	0.83	1.11	1.39	1.67	2.22	2.78	3.33	3.89



# EXATECH



# EXATECH

## Colour Chart

(s) after colour names indicates stock colours.  
All other colours require lead times and minimum order quantities.

### Full Body Finish

			
ETF045 Dove	ETF155 Ocre	ETF124 Land	ETF719 Gris
			
ETF151 Opal	ETF312 Colonial	ETF540 Emerald	ETF715 Gabro




### Stone & Cement Finish

			
ETS232 White Travertine	ETS220 Beige Travertine	ETS720 Grey Travertine	ETC073 Grey Cement
			
ETC033 Cream Cement	ETC320 Charcoal Cement	ETC237 Washed Grey	ETC234 Washed Beige

### Marble Finish

			
ETM161 Picasso	ETM031 Calacatta	ETM037 Calacatta Gold	ETM311 Cocoa
			
ETM313 Crema	ETM035 Coffee	ETM132 Misty	ETM154 Ocean

### Wood Finish

			
ETW018 Ash	ETW022 Blackbutt	ETW115 Oak	ETW028 Birch
			
ETW825 Hickory	ETW230 Walnut	ETW201 Teak	



We've Got It Covered



V0424



**Blue Chip Group Pty Ltd**

SYDNEY | MELBOURNE | BRISBANE | PERTH | ADELAIDE

P 1300 945 123

E [sales@bluechipgroup.net.au](mailto:sales@bluechipgroup.net.au)

[www.bluechipgroup.net.au](http://www.bluechipgroup.net.au)

DISCLAIMER No information or advice contained in this publication is binding in any way shape or form and is provided on a without prejudice basis. All photographs and colour swatches are indicative only. All dimensions are nominal and all product data and specifications are subject to change without notice. All pricing, sales, communications and transactions are subject to Blue Chip Group's terms of trading which are available on request.