



BLUECHIP

Metal Cladding



ULTRALIGN

System Brochure



www.bluechipgroup.net.au



ULTRALIGN

Extruded Aluminium Cladding

Description

ULTRALIGN intelligent aluminium facade system is available in a range of solid aluminium profiles providing a reliable and attractive modern facade alternative to other commercial cladding products. ULTRALIGN products have been specifically designed by experienced commercial facade professionals to meet the demands of today's facade industry. Australian made using the finest raw materials and finish options, ULTRALIGN offers an unprecedented level of quality, reliability, and longevity with an extensive range of colours, textures, and finish options, available in both standard and custom sizes.

Product Benefits



AS 1530.1 NON-COMBUSTIBLE

ULTRALIGN products are made of 100% solid aluminium which is totally non-combustible to AS 1530.1. Architects, engineers, and tenants can be assured ULTRALIGN will not burn or contribute to fire spread.



ENVIRONMENTALLY SUSTAINABLE

ULTRALIGN solid aluminium is a 100% recyclable product. Energy, emissions, wastage and materials are saved in every aspects of the product from manufacturing, to, delivery, installation and recycling.



INTELLIGENT INSTALLATION

The ULTRALIGN profile has been intelligently designed to provide excellent usability such as multi-angle mating and it has double swarf-free contact points for superior consistency and weatherproofing.



MINIMAL FABRICATION

ULTRALIGN panels can be ordered to custom lengths which eliminates additional fabrication. Panels are simply interlocked and tightened, then fixed. This also optimises usability and decreases waste.



PREFINISHED SYSTEM

The entire ULTRALIGN range is pre-finished. This means there is no requirement for painting or onsite finishing. Our finish options are both attractive and durable to maintain a protective coating over time.



INCREDIBLE AESTHETICS

ULTRALIGN profiles all have their own unique look with classic shadow lines, sharp step features or bold standing seams. Add in the choice of any anodised or powdercoat finish and the options are limitless.



100% AUSTRALIAN MADE

ULTRALIGN is a 100% Australian owned, designed and made product, which contributes to its outstanding quality and fast lead times. Using ULTRALIGN aids all aspects of the Australian economy.



COMPLETE SYSTEM




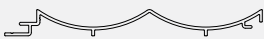


ULTRALIGN is supplied with a complete range of matching trims called CLADTRIM. These cater for all common details and junction types such as starter strip, cover strip, edge trim and corner profiles.

INSTALL & TECHNICAL

For installation and technical information, scan the QR code and view 'Downloads' tab.



Profiles

	Spec. Code: ULG15518 ULTRALIGN 155 x 18 Groove Profile
	Spec. Code: ULW15525 ULTRALIGN 155 x 25 Weatherboard Profile
	Spec. Code: ULF15518 ULTRALIGN 155 x 18 Fluted Profile
	Spec. Code: ULD15518 ULTRALIGN 155 x 18 Duoflute Profile
	Spec. Code: ULS20548 ULTRALIGN 205 x 48 Seam Profile
	Spec. Code: ULC15024 ULTRALIGN 150 x 24 Castellated Profile

Availability

CODE	DESCRIPTION	LEAD TIME	MOQ
UL*G15518	ULTRALIGN 155 x 18mm Groove (Insert Colour), 6.5m Length	4-5 Weeks	1 Length
UL*C15525	ULTRALIGN 155 x 25mm Cabin (Insert Colour), 6.5m Length	8-10 Weeks	50 Lengths
UL*F15518	ULTRALIGN 155 x 18mm Flute (Insert Colour), 6.5m Length	8-10 Weeks	50 Lengths
UL*D15518	ULTRALIGN 155 x 18mm Duoflute (Insert Colour), 6.5m Length	8-10 Weeks	50 Lengths
UL*S20548	ULTRALIGN 205 x 48mm Seam (Insert Colour), 6.5m Length	8-10 Weeks	50 Lengths
ULC15024	ULTRALIGN 150 x 24mm Castellated (Insert Colour), 5.0m Length	8-10 Weeks	50 Lengths

Colour-Matched Trims

CODE	DESCRIPTION	LEAD TIME	MOQ
CT*SS	CLADTRIM J-shape Starter Strip (Insert Colour), 5.5m Length	2-3 Weeks	1 Length
CT*ZPET	CLADTRIM Z-shape Joint Profile (Insert Colour), 5.5m Length	2-3 Weeks	1 Length
CT*CP	CLADTRIM 40mm 2-piece Corner (Insert Colour), 5.5m Length	2-3 Weeks	1 Length
CT*CS	CLADTRIM 40mm 2-piece Cover Strip (Insert Colour), 5.5m Length	2-3 Weeks	1 Length
CT*ZPET	CLADTRIM 40mm 2-piece Edge Trim (Insert Colour), 5.5m Length	2-3 Weeks	1 Length
CT*XXXX	CLADTRIM 50/40/20mm Angle (Insert Colour), 6.5m Length	2-3 Weeks	1 Length

System Components

				
Facade System	AS 1530.1 Insulation	Class 4 Membrane	Steel Top-hats	Joint Sealant

ULTRALIGN

Colour Chart

Anodised Earth Colours (Matt Finish)



UL1615 Paraburdoo UL0825 Hamersley UL1109 Karijini UL0318 Chichester

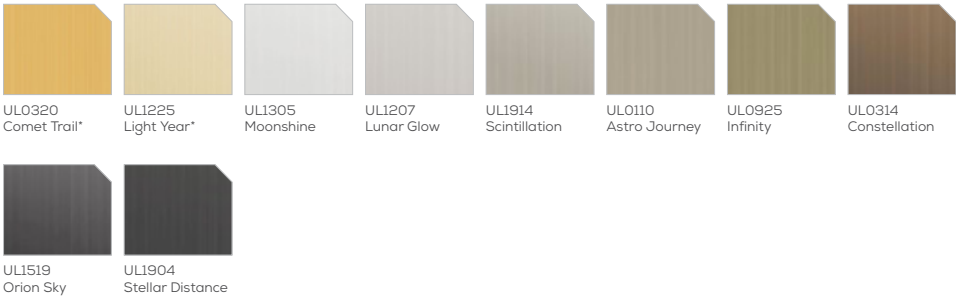
Anodised Earth Colours (Satin Finish)



UL1313 Millstream UL1318 Marble Bar UL0705 Gascoyne UL1825 Roxby



Anodised Space Colours



Material Colours



*Gold anodised colours: UL0320 Comet Trail and UL1225 Light Year will not be consistent and will have significant variation of colour and tone both between different lengths and within a single length.



ULTRALIGN

TRIGG RESIDENCE, WA

- Architect** Mick Rule Design
- Builder** Contour Projects
- Address** West Coast Drive, Trigg WA 6029
- Product** ULTRALIGN Extruded Aluminium Cladding
- Colour**



YY270A
Asteroid
Pearl Matt



THE TERRACES, CLAREMONT

Architect Hassell Studio Pty Ltd (WA)

Builder BGC Construction Pty Ltd

Address 3 Shenton Road, Claremont WA 6010

Product ULTRALIGN Extruded Aluminium Battens

Colour



UL1919
Solar Storm



ULTRALIGN

Extruded Aluminium Battens

Description

ULTRALIGN extruded aluminium battens system is available in a range of solid aluminium profiles providing a reliable and attractive modern facade alternative to other commercial cladding products. ULTRALIGN battens have been specifically designed by experienced commercial facade professionals to meet the demands of today's facade industry. Australian made using the finest raw materials and finish options, ULTRALIGN battens offer an unprecedented level of quality, reliability, and longevity with an extensive range of colours, textures, and finish options, available in both standard and custom sizes.

Product Benefits



AS 1530.1 NON-COMBUSTIBLE

ULTRALIGN products are made of 100% solid aluminium which is totally non-combustible to AS 1530.1. Architects, engineers, and tenants can be assured ULTRALIGN will not burn or contribute to fire spread.



ENVIRONMENTALLY SUSTAINABLE

ULTRALIGN solid aluminium is a 100% recyclable product. Energy, emissions, wastage and materials are saved in every aspects of the product from manufacturing, to, delivery, installation and recycling.



2-PIECE INSTALLATION

The ULTRALIGN batten profiles have been intelligently designed to provide excellent usability such as a simple 2-piece clip-together mounting system with inbuilt screw flutes for secret fixing and structural integrity.



MINIMAL FABRICATION

ULTRALIGN battens can be ordered to custom lengths which eliminates additional fabrication. The base clip is fixed to the main structure before the battens are simply interlocked together and the end-caps screwed into place.



PREFINISHED SYSTEM

The entire ULTRALIGN range is pre-finished. This means there is no requirement for painting or onsite finishing. Our finish options are both attractive and durable, providing a protective coating over time.



INCREDIBLE AESTHETICS

ULTRALIGN battens come in 6 different sizes so architects can mix-and-match and use different length for infinite design possibilities. Add in any anodised or powdercoat finish and the options are limitless.



100% AUSTRALIAN MADE

ULTRALIGN is a 100% Australian owned, designed and made product, which contributes to it's outstanding quality and fast lead times. Using ULTRALIGN aids all aspects of the Australian economy.



CUSTOM DESIGNS

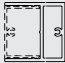

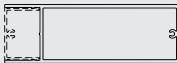

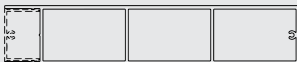

Locally Australian made, ULTRALIGN battens can be supplied in an almost infinite range of custom sizes, shapes and finishes. Contact us to discuss your unique vision for your next battens project.

INSTALL & TECHNICAL

For installation and technical information, scan the QR code and view 'Downloads' tab.



Profiles

	Specification Code: UL*B5050 ULTRALIGN 50 x 50 Batten
	Specification Code: UL*B10050 ULTRALIGN 100 x 50 Batten
	Specification Code: UL*B15050 ULTRALIGN 150 x 50 Batten
	Specification Code: UL*B20050 ULTRALIGN 200 x 50 Batten
	Specification Code: UL*B25050 ULTRALIGN 250 x 50 Batten
	Specification Code: UL*B30050 ULTRALIGN 300 x 50 Batten

Availability

CODE	DESCRIPTION	LEAD TIME	MOQ
UL*BC65	ULTRALIGN Batten Base Clip (Insert Colour), 6.5m Length	4-5 Weeks	1 Length
UL*45BC65	ULTRALIGN 45 Degree Base Clip (Insert Colour), 6.5m Length	4-5 Weeks	1 Length
UL*UC65	ULTRALIGN Batten U-channel (Insert Colour), 6.5m Length	4-5 Weeks	1 Length
UL*B5050	ULTRALIGN 50 x 50mm Batten (Insert Colour), 6.5m Length	4-5 Weeks	1 Length
UL*B10050	ULTRALIGN 100 x 50mm Batten (Insert Colour), 6.5m Length	4-5 Weeks	1 Length
UL*B15050	ULTRALIGN 150 x 50mm Batten (Insert Colour), 6.5m Length	4-5 Weeks	1 Length
UL*B20050	ULTRALIGN 200 x 50mm Batten (Insert Colour), 6.5m Length	4-5 Weeks	1 Length
UL*B25050	ULTRALIGN 250 x 50mm Batten (Insert Colour), 6.5m Length	4-5 Weeks	1 Length
UL*B30050	ULTRALIGN 300 x 50mm Batten (Insert Colour), 6.5m Length	4-5 Weeks	1 Length

*The asterisk in the code denotes the specified type of finish to be applied to the aluminium extrusion as follows:
U = Ultrawood Timber Colours, A = Anodised Colours, M = Material Colours and P = Powdercoat Colours.

Accessories

CODE	DESCRIPTION	LEAD TIME	MOQ
UL*EXXX50	ULTRALIGN XXX x 50mm End Cap (Insert Colour), 10 Pack	4-5 Weeks	1 Pack
CFM40X	ULTRAFIX 40mm x 8g End Cap Screw (Insert Colour), 100 Pack	3-4 Weeks	1 Pack

ULTRALIGN

Colour Chart

Powdercoat Colours – visit interpon.com/au/en



Exterior Durable Color Range

Interpon Durable Exterior Color Range



Interpon Living Series Color Range

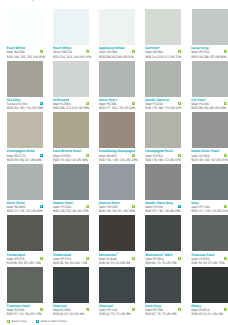


Sustainability

Interpon's commitment to sustainability is reflected in our products and processes. We are proud to be a member of the Sustainable Development Goals (SDG) and to have achieved ISO 14001 certification. Our products are designed to be durable, long-lasting, and easy to maintain, reducing the need for frequent repainting and the associated environmental impact. We also use eco-friendly materials and processes in our manufacturing, ensuring that our products are both sustainable and high-quality.



Interpon D2525



Interpon D2525 Flat Matt



Interpon D2525 Color Vitality

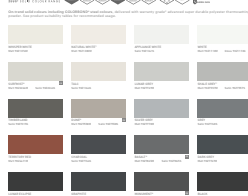


Powdercoat Colours – visit duluxpowders.com.au

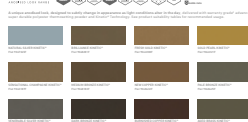


Premium Architectural Colour Selector

DURATEC



ELECTRO



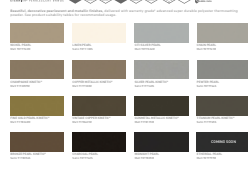
FLUOROSET



ALLURE



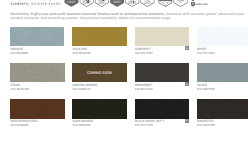
DURATEC



CHARISMA



DURATEC



DURATEC



ULTRALIGN

ASHTON APARTMENTS

Architect	Harris-Jenkins Architects
Builder	BGC Construction Pty Ltd
Address	Ashton Avenue, Claremont WA 6010
Product	ULTRALIGN Extruded Aluminium Cladding
Colour	



ELECTRO
Gold Pearl



ALL SAINTS' COLLEGE

Architect Matthew Crawford Architects

Builder Byte Construct Pty Ltd

Address Ewing Avenue, Bull Creek WA 6149

Product ULTRALIGN Extruded Aluminium Battens

Colour



GL229A
Monument Matt



ULTRALIGN

The Complete Package

1

Innovative support system:

Brackets and rails designed for high performance, design flexibility, and efficient installation

2

Certified fasteners and anchors:

All fixing components are manufactured from high quality corrosion resistant materials for long-term durability, strength, and ultimately, peace of mind

3

Full project support:

Expect BLUECHIP-grade customer service across your entire project, from tender to installation

4

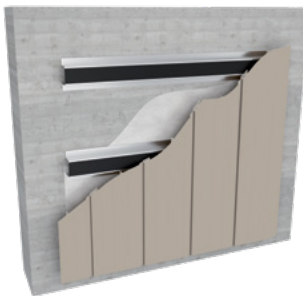
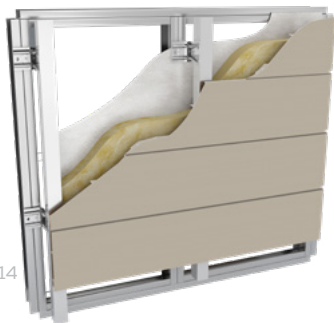
Reliable technical advice:

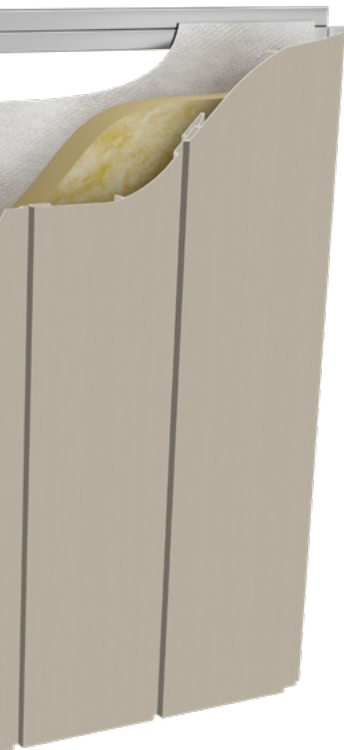
Our technical teams undertake all the calculations and drawings you need quickly and accurately, and provide you with technical advice you can trust

5

Fast turnaround:

A timely response on indicative costs, schematic drawings and quotes, and prompt on-site delivery - we have the set-up you need to keep your project moving



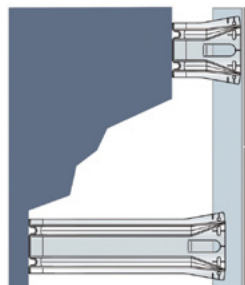
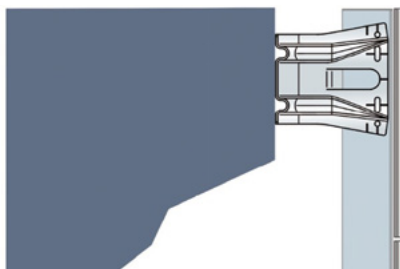
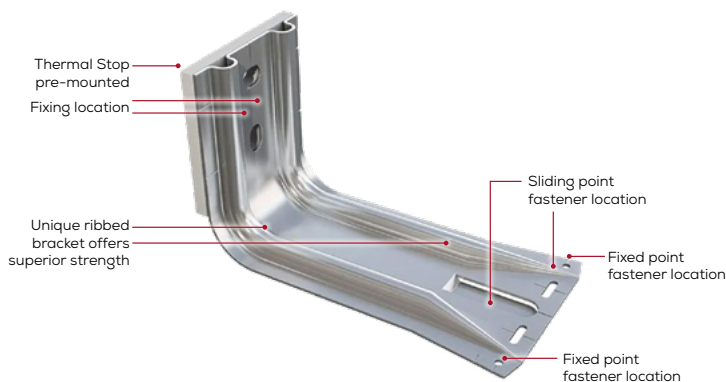


Highly versatile: The bracket and rail system can be configured for any rainscreen façade project – including sloping façades and curved structures. It is suitable for any substrate, cladding material or insulation thickness. As well as accommodating both vertical and horizontal installation configurations, the system can also be used in soffit applications

Third-party accredited: The BICEP® facade support system is manufactured to all current regulations and standards including EN1090, ISO9001 and ISO14001

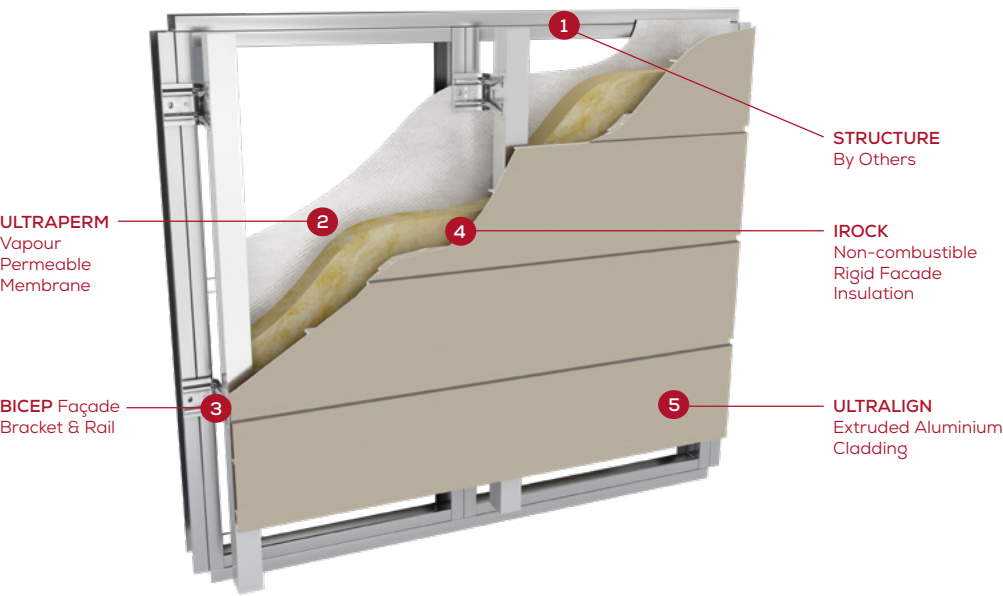
Speed of installation: The system is configured to ensure quick and easy installation while maintaining the accuracy required for structural security

Cost effective: Thanks to the strength of the unique patented bracket design, potentially fewer brackets are needed per square metre – ensuring maximum quality and performance for minimum cost



ULTRALIGN

Insulated Horizontal Installation



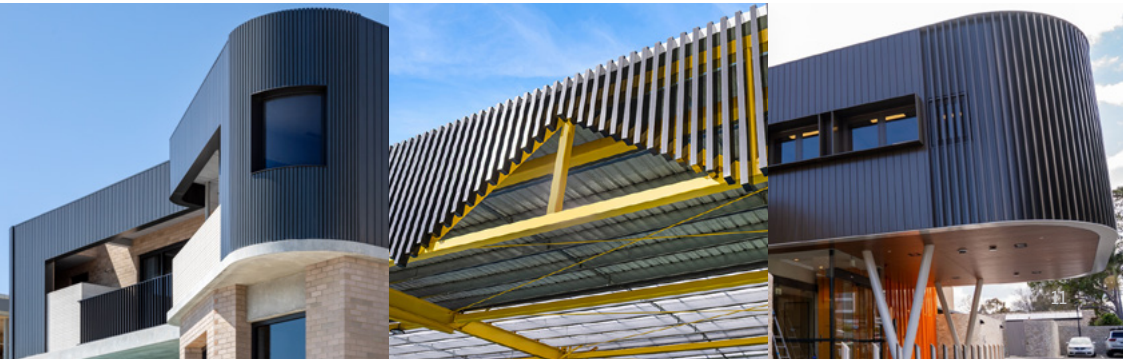
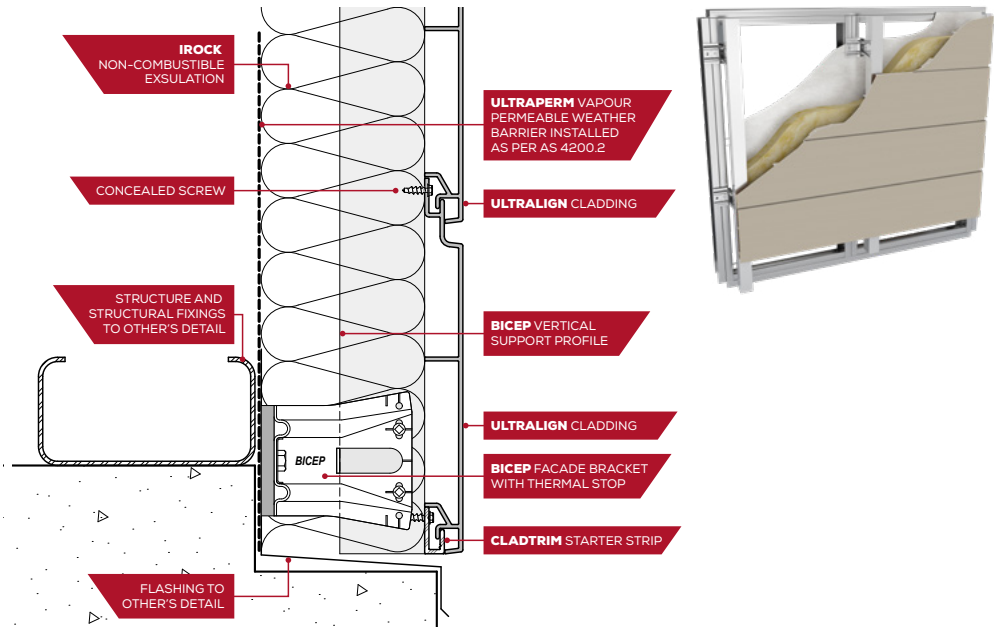
Facade System Compliance

DESCRIPTION	NCC SECTION	AS/NZS TEST	RESULT
FIRE PERFORMANCE	C2D10(6)(e)	AS 1530.1 AS 1530.3	Deemed Non-combustible
CONDENSATION PERFORMANCE	F8D3	AS 4200.1 ASTM E96-2016	PASS PASS - Class 4
WEATHER PROOFING PERFORMANCE	F3P / F3VI H2P2 / H2VI	AS 4284	PASS
THERMAL PERFORMANCE	J4D3 J3D6	AS 4859.1 / ASTM C518	0.036W/mK 0.06W/mK
ACOUSTIC		ISO 354-2006	1.0 NRC



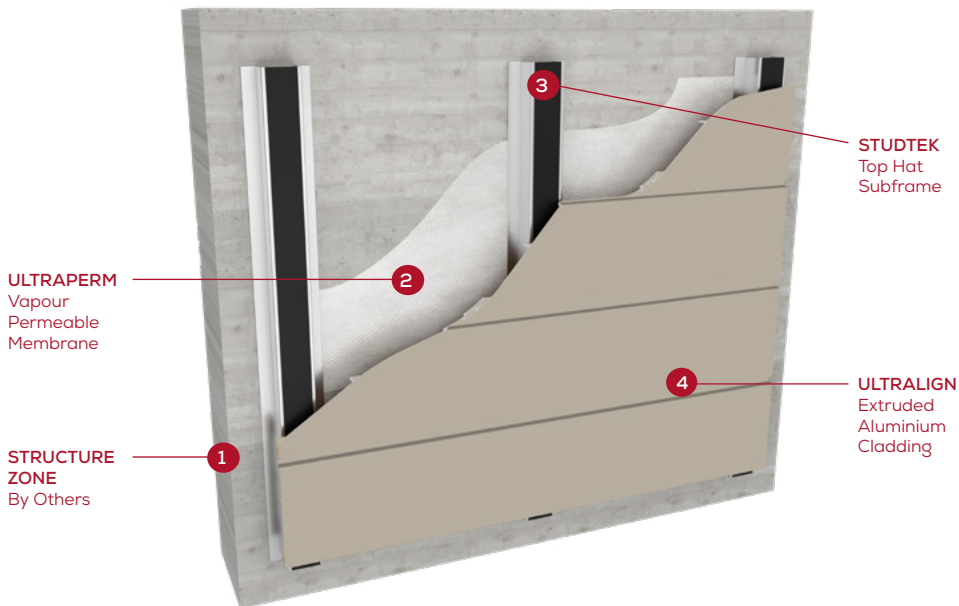
Specification

SYSTEM DESCRIPTION	ULTRALIGN Cassette Fixed to BICEP Bracket System with external IROCK Non-combustible Facade Insulation & Weather Barrier							
FACADE MATERIAL	ULTRALIGN Extruded Aluminium Cladding							
COLOUR	Refer External Finishes Schedule							
FIXING METHOD	Secret Mechanical Screw Fix – Horizontal Layout							
SUB-FRAME SYSTEM	BICEP Bracket System For Insulated Facades							
EXTERNAL INSULATION	IROCK Non-Combustible Facade Insulation							
WEATHER BARRIER	ULTRAPERM Class 4 Vapour Permeable Membrane							
INSTALLATION R-VALUE	30mm	40mm	50mm	60mm	80mm	100mm	120mm	140mm
	0.83	1.11	1.39	1.67	2.22	2.78	3.33	3.89



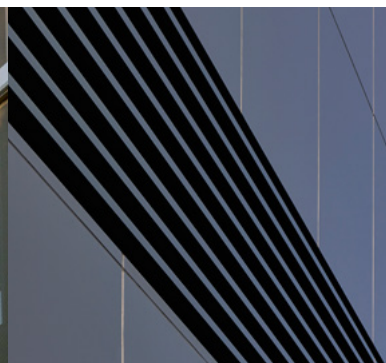
ULTRALIGN

Standard Horizontal Installation



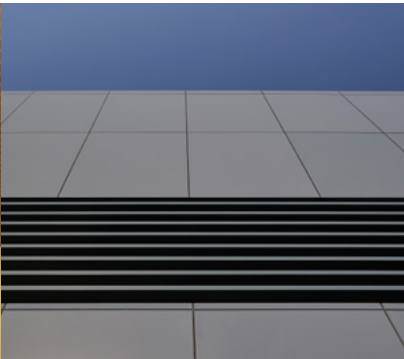
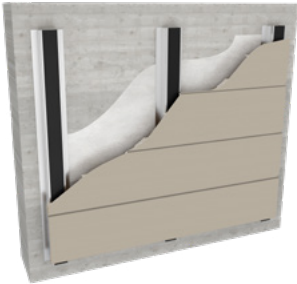
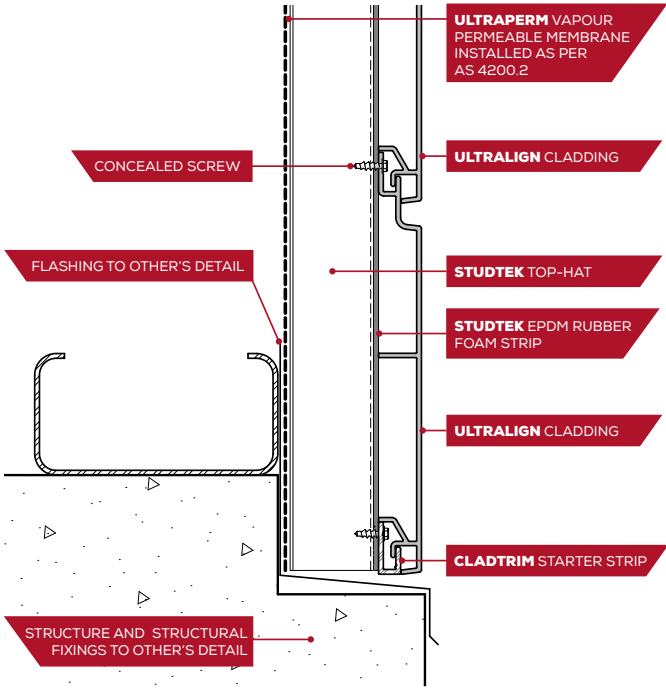
Facade System Compliance

DESCRIPTION	NCC SECTION	AS/NZS TEST	RESULT
FIRE PERFORMANCE	C2D10(6)(e)	AS 1530.1 AS 1530.3	Deemed Non-combustible
CONDENSATION PERFORMANCE	F8D3	AS 4200.1 ASTM E96-2016	PASS PASS - Class 4
WEATHER PROOFING PERFORMANCE	F3P1 / F3V1 H2P2 / H2V1	AS 4284	PASS



Specification

SYSTEM DESCRIPTION	ULTRALIGN Secret Fixed to STUDTEK Top Hat Framing with Weather Barrier
FACADE MATERIAL	ULTRALIGN Extruded Aluminium Cladding
COLOUR	Refer External Finishes Schedule
FIXING METHOD	Secret Mechanical Screw Fix – Horizontal Layout
SUB-FRAME SYSTEM	STUDTEK Top Hat Framing
WEATHER BARRIER	ULTRAPERM Class 4 Vapour Permeable Membrane



ULTRALIGN

LITTLE LANE APARTMENTS

Architect	Harris-Jenkins Architects
Builder	ICON Construction
Address	52 Adelaide Street, Fremantle WA 6160
Product	ULTRALIGN Extruded Aluminium Cladding
Colour	



UL0320
Comet Trail



HOTEL RENMARK

Architect SMFA

Builder Michael Kregar Building

Address Murray Avenue, Renmark SA 5341

Product ULTRALIGN Extruded Aluminium Battens

Colour



GA236A
Surf Mist





We've Got It Covered



V1125



Blue Chip Group Pty Ltd

SYDNEY | MELBOURNE | BRISBANE | PERTH | ADELAIDE

P 1300 945 123

E sales@bluechipgroup.net.au

www.bluechipgroup.net.au

DISCLAIMER No information or advice contained in this publication is binding in any way shape or form and is provided on a without prejudice basis. All photographs and colour swatches are indicative only. All dimensions are nominal and all product data and specifications are subject to change without notice. All pricing, sales, communications and transactions are subject to Blue Chip Group's terms of trading which are available on request.