



BLUECHIP

Metal Cladding

ULTRASURE

Product Brochure

www.bluechipgroup.net.au



ULTRASURE

Prefinished Solid Aluminium Panel

Description

ULTRASURE completes our range of BCA compliant, Deemed-to-Satisfy non-combustible aluminium cladding solutions. Offering very high impact resistance and the ability to be curved, rolled or perforated, ULTRASURE panels do not require fabrication prior to coating, greatly reducing lead-times and costs. Due to its high thermal movement and the risk of score fracturing, ULTRASURE, like all 3mm solid aluminium panels, is NOT suitable for use in the common v-groove cassette fixing method, however it can be face-fixed or break-pressed into the traditional rainscreen hook-and-rail cassette system*.

* For the common v-groove cassette fixing method use ULTRACORE IQ intelligent non-combustible core panel.

Product Benefits



FACE-FIX OR BREAK-PRESS ONLY

BLUECHIP does NOT endorse installing any brand of SOLID aluminium panels with the v-grooved cassette system - it is a fundamentally flawed methodology which will lead to future structural failure and water ingress issues.



NCC 2022 COMPLIANCE

ULTRASURE solid aluminium panel is Deemed-to-Satisfy non-combustible as per NCC 2022 Clause C2D10(6)(e) making it compliant for use as external cladding on any project of types A, B & C construction.



CURVE, ROLL OR PERFORATE

The ULTRASURE 3mm aluminium panel offers excellent design versatility as it can be made into panels of almost any shape and size as well as being suitable for curved panels, rolling and perforating.



UNLIMITED CUSTOM COLOURS

ULTRASURE 3mm solid aluminium panel utilises the same PVDF coating as ULTRABOND FR and ULTRACORE so it is available in the same extensive colour range and custom colours. MOQ's apply.



FINISHED BEFORE FABRICATION

Unlike traditional powder coated panels, ULTRASURE is prefinished with factory applied PVDF coating and a protective peel-off film before fabrication into cladding panels providing many practical advantages.



PVDF PAINT SYSTEM

ULTRASURE 3mm aluminium panel only uses the highly recognised PVDF KYNAR 500 or FEVE paints known for their high durability, providing the optimum resistance to weather and industrial pollution.



AS 1530.1 NON-COMBUSTIBLE

ULTRASURE is one of the few aluminium cladding panel solutions that is Deemed-to-Satisfy non-combustible when tested to AS 1530.1 and AS 1530.3 as per the requirements of NCC 2022 Clause C2D10(6)(e).



MANUFACTURER'S WARRANTY

ULTRASURE 3mm aluminium panel coating system has a long track record of consistency, reliability and quality allowing us to offer up to 15 year's warranty when installed by a licensed installer.

INSTALL & TECHNICAL

For installation and technical information, scan the QR code and view 'Downloads' tab.



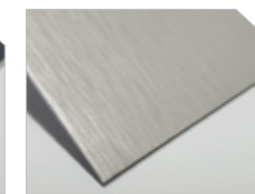
Product Range



ULTRASURE
Metallic Colours



ULTRASURE
Solid Colours



ULTRASURE
Metal Imitations

Availability

DESCRIPTION	SHEET SIZES	LEAD TIME	MOQ
ULTRASURE Metallic Colours	2500, 3200, 4000 x 1250mm 2500, 3200, 4000 x 1500mm	10-12 Weeks	1200m ²
ULTRASURE Solid Colours	2500, 3200, 4000 x 1250mm 2500, 3200, 4000 x 1500mm	10-12 Weeks	1200m ²
ULTRASURE Non-stock, BCG & Custom Colours	2500, 3200, 4000 x 1250mm 2500, 3200, 4000 x 1500mm	10-12 Weeks	1200m ²
ULTRASURE Metal Imitation Finishes	2500, 3200, 4000 x 1250mm 2500, 3200, 4000 x 1500mm	10-12 Weeks	1200m ²

Accessories

CODE	DESCRIPTION	LEAD TIME	MOQ
CFM30	EUROFIX 30mm Metal Screw (Colour), 250 Pack	3-4 Weeks	1 Pack
CFMW30	EUROFIX 30mm Screw & Washer (Colour), 250 Pack	3-4 Weeks	1 Pack

System Components



Facade System



AS 1530.1 Insulation



Class 4 Membrane



Steel Top-hats



Joint Sealant

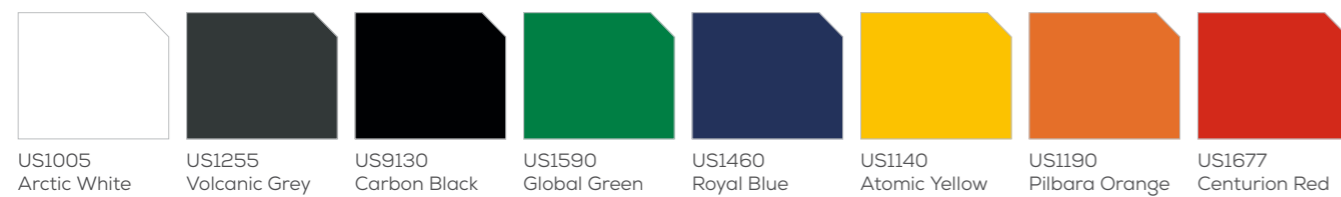
ULTRASURE

Colour Chart

Metallic Colours



Solid Colours



BCG Custom Colours



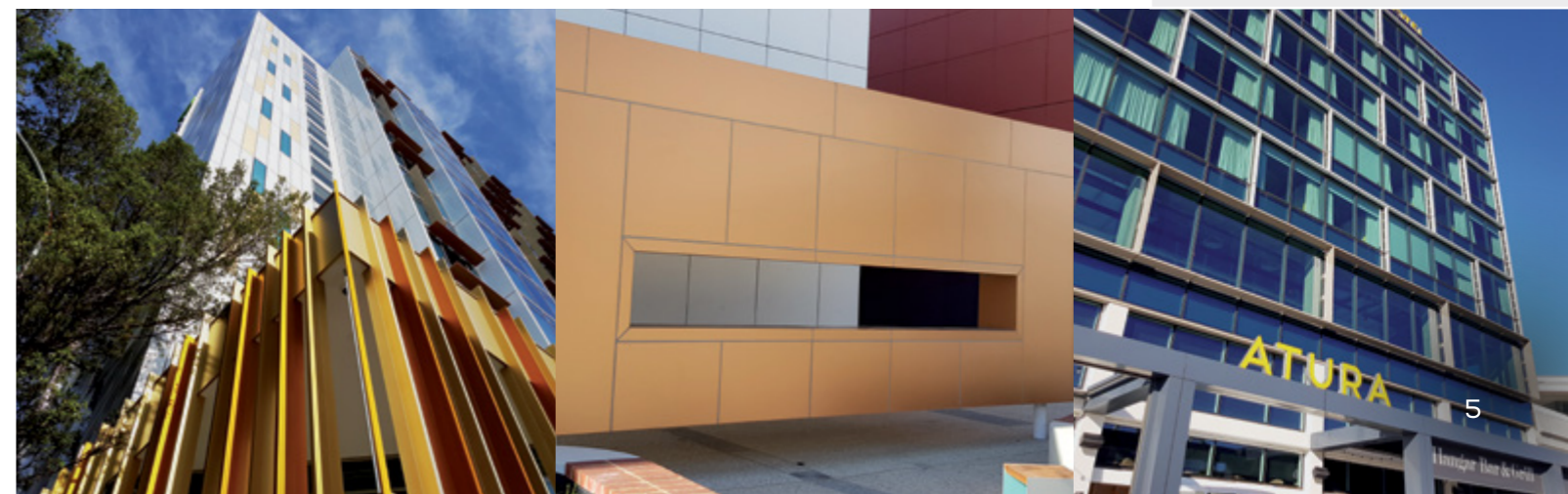
BCG Custom Colours Cont'd



Metal Imitations



UNLIMITED CUSTOM COLOURS
 ULTRASURE has unlimited colour options, we are able to match any colour from any other colour range. With small MOQ's and fast lead times you can realise your vision.





We've Got It Covered



V0924



Blue Chip Group Pty Ltd

SYDNEY | MELBOURNE | BRISBANE | PERTH | ADELAIDE

P 1300 945 123

E sales@bluechipgroup.net.au

www.bluechipgroup.net.au

DISCLAIMER No information or advice contained in this publication is binding in any way shape or form and is provided on a without prejudice basis. All photographs and colour swatches are indicative only. All dimensions are nominal and all product data and specifications are subject to change without notice. All pricing, sales, communications and transactions are subject to Blue Chip Group's terms of trading which are available on request.