



BLUECHIP

Facade Systems

STUDTEK

# Product Brochure

[www.bluechipgroup.net.au](http://www.bluechipgroup.net.au)



# STUDETEK

## Steel Top-hat Framing System

### Description

STUDETEK is a complete range of roll-formed steel sub-frame profiles designed for use with all types of cladding products. Including all different sizes of common profiles such as top-hats, c-channels and angles, STUDTEK also provides a highly versatile ventilated facade system which is widely used for installing many different cladding panels such as through-colour fibre cement, high-pressure laminate and 9mm CFC. Supplied with all the required accessories such as backing strips, cavity closers and foam gaskets for weatherproofing, the STUDTEK facade system is manufactured from zinc-coated steel in accordance with ISO 9001 for long-term durability.

### Product Benefits



#### NON-COMBUSTIBLE

Made of 100% steel, STUDTEK steel cladding framing is deemed-to-satisfy non-combustible in accordance with NCC 2022, Clause C2D10(5)(b). STUDTEK foam gaskets and packers also comply with Clauses C2D10(4)(a) & C2D10(4)(i)(i).



#### BACK-TO-BACK WARRANTY

When you specify STUDTEK steel cladding framing with one of our many cladding products, we can offer additional peace-of-mind by providing a back-to-back warranty covering the complete system all from one supplier.



#### ZINC DURABILITY

Manufactured from high-grade zinc-coated steel, the STUDTEK facade system offers superior corrosion resistance and durability compared to common galvanised steel especially in coastal and marine environments.



#### A COMPLETE SYSTEM

Along with the STUDTEK steel cladding framing and accessories such as backing strips, foam gaskets and cavity closers, we can also supply; BICEP facade brackets, IROCK insulation and ULTRAPERM membrane for the complete system.



#### ISO 9001 ASSURANCE

Roll-formed using the latest state-of-the-art computer controlled (CNC) machines in accordance with ISO 9001, you can be assured that all STUDTEK steel cladding framing conforms with exacting dimensional tolerances.



#### ALL CLADDING TYPES

As one of Australia's largest cladding suppliers, we are in the ideal position to design and supply compatible sub-frame systems. From high-spec architectural facades to common commodity cladding, STUDTEK has all bases covered.



#### IMPROVED STRENGTH

Not content with the common industry standard of 1.15BMT, key profiles in the STUDTEK range are made from stronger 1.20BMT steel to exceed normal engineering expectations and guarantee structural performance.

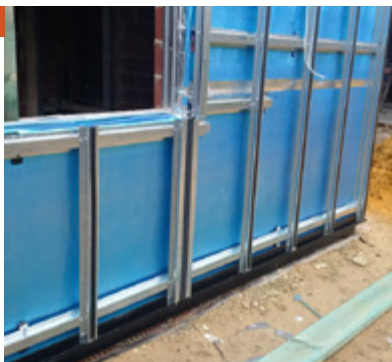


#### EXCELLENT VALUE

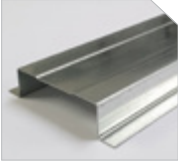
Superior zinc-coated finish and increased material base-metal-thickness (BMT) along with a manufacturer to industry direct supply chain means the STUDTEK facade system offers exceptional value-for-money to building owners.

### INSTALL & TECHNICAL

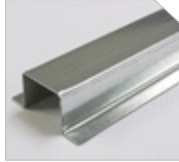
For installation and technical information, scan the QR code and view 'Downloads' tab.



## Studtek Facade System



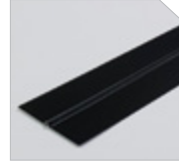
SZ1203558  
Joint Top-hat



SZ503558  
Intermediate Top-hat



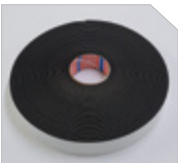
SCC60  
Cavity Closer



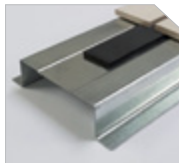
SJS\*\*\*  
Backing Strip

CODE	DESCRIPTION	LEAD TIME	MOQ
SZ1203558	STUDTEK 120 x 35mm Zinc-coated Joint Top-hat, 5.8m (1.20bmt)	Stock	1 Length
SZ503558	STUDTEK 50 x 35mm Zinc-coated Top-hat, 5.8m Length (1.20bmt)	Stock	1 Length
SZA757560	STUDTEK 75 x 75mm Zinc-coated Angle, 6.0m Length (1.15bmt)	Stock	1 Length
SCC60	STUDTEK 35 x 35mm Black Cavity Closer, 6.0m Length (0.55bmt)	Stock	1 Length
SJS359	STUDTEK 67 x 3.5mm Black Backing Strip, 3.59m Length (0.48bmt)	Stock	1 Length
SJS299	STUDTEK 67 x 3.5mm Black Backing Strip, 2.99m Length (0.48bmt)	Stock	1 Length

## Studtek Adhesive Foam Gaskets



TFG4048/32  
Vertical Joint Gaskets



JOINT GASKET  
Applied to Top-hat



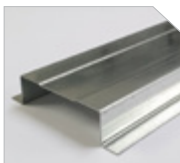
TFG1232  
Intermediate Gasket

CODE	DESCRIPTION	LEAD TIME	MOQ
TFG4048	STUDTEK 40 x 4.8mm EPDM Vertical Joint Gasket, 15m Roll	Stock	1 Roll
TFG4032	STUDTEK 40 x 3.2mm EPDM Vertical Joint Gasket, 25m Roll	Stock	1 Roll
TFG1232	STUDTEK 12 x 3.2mm EPDM Intermediate Gasket, 25m Roll	Stock	1 Roll

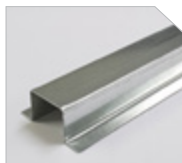
# STUDTEK

## Steel Top-hat Framing System

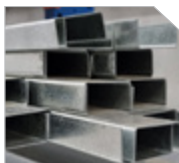
### Studtek Standard Cladding Sub-framing



SZ1203558  
Joint Top-hat



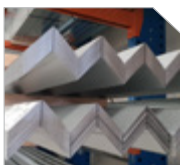
SZ50\*\*58  
Standard Top-hat



SZ653058  
C-channel Framing

CODE	DESCRIPTION	LEAD TIME	MOQ
SZ1203558	STUDTEK 120 x 35mm Zinc-coated Joint Top-hat, 5.8m (1.20bmt)	Stock	1 Length
SZ505058	STUDTEK 50 x 50mm Zinc-coated Top-hat, 5.8m Length (1.20bmt)	Stock	1 Length
SZ503558	STUDTEK 50 x 35mm Zinc-coated Top-hat, 5.8m Length (1.20bmt)	Stock	1 Length
SZ502458	STUDTEK 50 x 24mm Zinc-coated Top-hat, 5.8m Length (1.20bmt)	Stock	1 Length
SZ501558	STUDTEK 50 x 15mm Zinc-coated Top-hat, 5.8m Length (1.20bmt)	Stock	1 Length
SZ653058	STUDTEK 65 x 30mm Zinc-coated C-channel, 5.8m Length (1.20bmt)	Stock	1 Length

### Studtek Angles & Horseshoe Packers



SZA/SGA\*\*\*\*\*  
Angles



BP\*\*\*  
Horseshoe Packers

CODE	DESCRIPTION	LEAD TIME	MOQ
SZA757560	STUDTEK 75 x 75mm Zinc-coated Angle, 6.0m Length (1.15bmt)	Stock	1 Length
SGA505036	STUDTEK 50 x 50mm Angle, 3.6m Length (0.75bmt)	Stock	1 Length
SGA353536	STUDTEK 35 x 35mm Angle, 3.6m Length (0.75bmt)	Stock	1 Length
SGA252536	STUDTEK 25 x 25mm Angle, 3.6m Length (0.75bmt)	Stock	1 Length
BP10	STUDTEK 75 x 1.0mm Horseshoe Packers (White), 4000 Pack	Stock	1 Pack
BP30	STUDTEK 75 x 3.0mm Horseshoe Packers (Blue), 2000 Pack	Stock	1 Pack
BP50	STUDTEK 75 x 5.0mm Horseshoe Packers (Yellow), 1600 Pack	Stock	1 Pack
BP100	STUDTEK 75 x 10.0mm Horseshoe Packers (Black), 600 Pack	Stock	1 Pack



G  
18

SCENTRE GROUP  
operational excellence  
people protecting people



We've Got It Covered



V1024



**Blue Chip Group Pty Ltd**

SYDNEY | MELBOURNE | BRISBANE | PERTH | ADELAIDE

P 1300 945 123

E [sales@bluechipgroup.net.au](mailto:sales@bluechipgroup.net.au)

[www.bluechipgroup.net.au](http://www.bluechipgroup.net.au)

DISCLAIMER No information or advice contained in this publication is binding in any way shape or form and is provided on a without prejudice basis. All photographs and colour swatches are indicative only. All dimensions are nominal and all product data and specifications are subject to change without notice. All pricing, sales, communications and transactions are subject to Blue Chip Group's terms of trading which are available on request.